

Scanning Your Photos by Mark Thompson

1. Launch the program Adobe PhotoDeluxe.

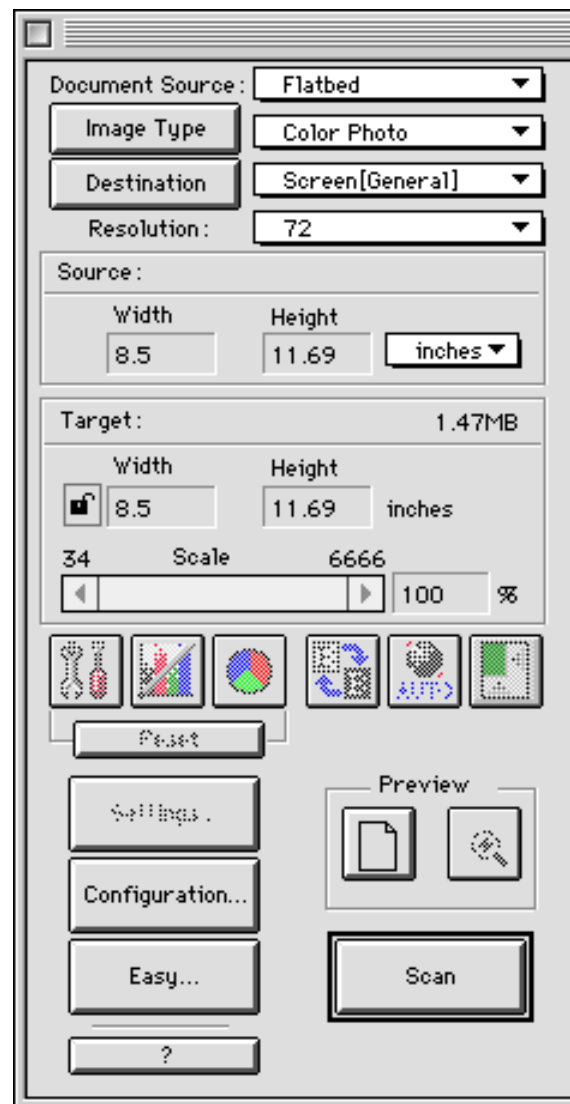


2. Click the “Get Picture” button on the upper-left of the screen. Click the “Scanners” button and choose the scanner type that matches your equipment. Then click the button with a picture of a scanner on it, or go to the “File” menu and select “Open Special > Scan Photo.” A scanning window like the one at the right opens.
3. From the “Image Type” pulldown menu, select the type of material you are about to scan (color photo, B&W photo, line artwork, etc.).
4. From the Destination pulldown menu, select the way you intend to use the item you are scanning (view on screen, print on laser printer, etc.).
5. Click the “Preview” button.
This displays the item in the scanner.
6. Drag the cursor to select the image area that you wish to scan.
7. Press the “Scan” button.

The scanner scans the image. You must now save your scanned document. Click “OK” to bypass the EasyPhoto message and go to the “Save” dialog box. Enter a name for your scanned image and save the file.

That's It

You've now got your image scanned and saved. Most images will benefit from some touching up. The next page will guide you through the process of sharpening, cropping, and correcting color and contrast.



Enhancing Your Scanned Images

by Mark Thompson

1. Click the “Advanced” button on the upper left of the screen.



2. Click the “Quality” tab and then press “Instant Fix.” This will usually improve the image. If you do not like the change, select “Undo” from the “Edit” menu. (*You can also access this function by going to the “Quality” menu and selecting “Instant Fix.”*)
3. Click the “Sharpen” button. Most images will benefit from some sharpening. (*You can also access this function by going to the “Quality” menu and selecting “Sharpen.”*)



4. If you need to crop your image further, click the “Size” tab, press “Trim,” and follow the on-screen directions.
5. Perform any other enhancements that you wish to make using either the menu bar or the buttons at the top of the screen. When you are satisfied with the way your image looks, it’s time to save it in a format that fits the way you intend to use the photo.



6. Click the “Send” button at the upper-left of the screen and then click the “Export” tab.
7. If you have a black and white photo, click the “Grayscale” button. For other types of images, click “Other Export.” *If you are saving a piece of artwork with just a few solid colors, GIF Format is a good choice.*
8. A standard “Save” dialog box appears. Use the “Format” pulldown menu to select the appropriate file format for your image. For photos to be printed on paper, choose TIFF. For photos to be viewed on the computer, select JPEG.

Many other types of enhancements are possible with PhotoDeluxe. By exploring the other options for creating special effects, calendars, and greeting cards, you’ll become familiar with the possible uses for this program.

